

## Diversity

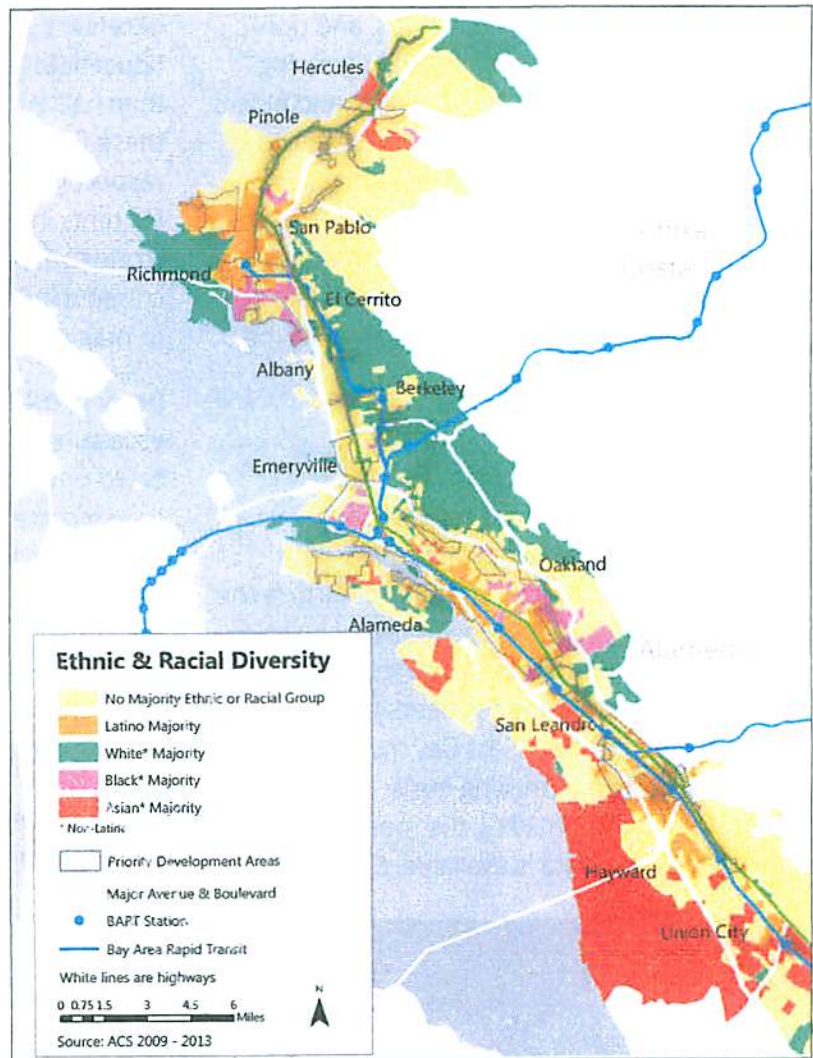
The East Bay is among the most diverse places in the world. Its diversity extends from the natural environment to culture, workforce, housing, and language.

**Race & Ethnicity:** 12 of the 16 jurisdictions in the East Bay Corridor have no racial or ethnic majority, and no group makes up more than 56% of the population of any jurisdiction. Alameda County is among the five most diverse counties in the US; Oakland is the most diverse large American city.

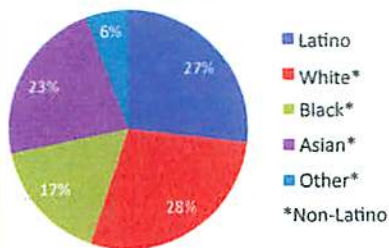
**Language:** 45% of households speak a second language at home, creating a welcoming environmental for new residents and a stronger climate for international trade.

**Workforce:** The East Bay workforce has a wide range of skill levels to meet the needs of a diverse economy. School and community college districts are taking steps to further improve skill levels through Linked Learning, which connects students to job and networking opportunities while in school.

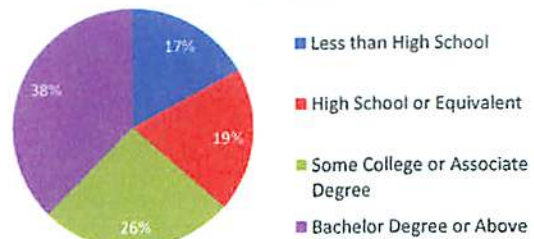
**Housing:** Housing in the corridor is evenly divided between single family homes and a variety of multi-family residences ranging from townhomes to condo and apartment buildings. This is critical for meeting the needs of households as they transition in size and age.



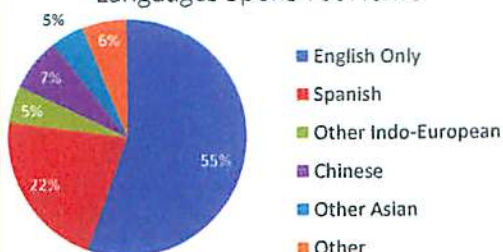
Race and Ethnicity



Education



Languages Spoken at Home



Housing

