

## BACKGROUND INFORMATION ON TODAY'S SPEAKERS



**Joël Ramos** is the Regional Planning Director for TransForm, a transportation advocacy nonprofit. He began his professional career as an assistant planner for the Spanish Speaking Unity Council in East Oakland. He then moved on to build a coalition of labor, environmental, and social justice groups to win community and political support for economic development around one of the largest transit-oriented development projects in California. For the past seven years, Ramos has been working with the Great Communities Collaborative on several transit-oriented development planning processes, and is helping to maximize community involvement and build awareness and support for Bus Rapid Transit in the East Bay. ( *PANEL TWO* )



**Adam Stocker** is a staff researcher for the Transportation Sustainability Research Center (TSRC) at UC Berkeley, with research experience in shared mobility modes and their impacts on user travel behavior, the built environment, and policy and regulatory issues. He received a Master's in Transportation Engineering in 2015 from UC Berkeley, and has previously worked as a student researcher on connected vehicles and as a travel modeler for the San Francisco County Transportation Authority. ( *PANEL TWO* )



**Krute Singa** is the manager of Commute Smart ([www.sfenvironment.org/transportation/sustainable-commuting-programs](http://www.sfenvironment.org/transportation/sustainable-commuting-programs)), an initiative of the San Francisco Department of the Environment providing programs and outreach to San Francisco residents, businesses, and commuters to reduce solo driving trips in personal vehicles. Prior to joining the Department of Environment, she worked on a variety of transportation projects and policies as a planner for over ten years, through positions with consulting firms and public agencies nationally and abroad, including Washington D.C. and Sydney, Australia. She holds a Master's in City Planning from UC Berkeley. ( *PANEL THREE* )



The opportunity of organizing in the vibrant, diverse community of the Bay Area compelled **Mary Lim-Lampe** to move from her hometown of Kansas City, Missouri to Oakland, California. She has been Lead Organizer for Genesis for four years, focusing on issues that will shift the narrative of regional equity in Bay Area communities for the better. Lim-Lampe has a Bachelor of Arts in Political Science from the University of Missouri at Kansas City, and a Juris Doctorate from the St. Louis University School of Law. Before becoming an organizer, she worked for eleven years in the social work field, providing direct service to marginalized and disenfranchised citizens. Ten years ago, she shifted from direct service to organizing around issues of social justice. ( *PANEL THREE* )



**John Boesel** is the President and CEO of CALSTART, a national organization with more than 150 member companies that is dedicated to the growth of the clean transportation technology industry. He joined the organization as Vice President and was promoted to his current position in 2001. Prior to joining CALSTART, Boesel worked as a legislative aide, focusing on environmental and energy policy, in the California State Assembly as well as being a commercial banker for Wells Fargo. He has an MBA from UC Berkeley and a Bachelor of Arts from UC Davis. He currently serves as a member of the Advisory Board of the Precourt Energy Efficiency Center at Stanford University and a member of the California Plug-in Electric Vehicle Collaborative. ( *PANEL THREE* )

## BACKGROUND INFORMATION ON TODAY'S SPEAKERS



**Jim Beall** serves as California State Senator for District 15, which covers a large portion of Santa Clara County and is home to 950,000 residents. He chairs the Senate Transportation and Housing Committee, and is a member of several other Senate committees, including Appropriations; Budget and Fiscal Review; Governance and Finance; and Public Employment and Retirement. Prior to his election to the State Senate in 2012, Beall served six years in the State Assembly, 12 years on the Santa Clara County Board of Supervisors, and 14 years on the San Jose City Council. During his tenure as a local elected official, Beall also served for two decades on the Metropolitan Transportation Commission. He is a graduate of San Jose State University, where he focused on Urban Planning and Public Finance and earned a Bachelor's in Political Science. ( *KEYNOTE* )



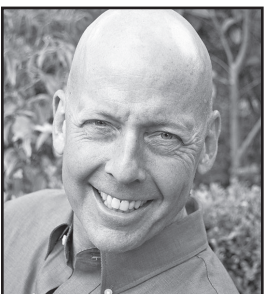
**Tess Lengyel**, Deputy Director of Planning and Policy for the Alameda County Transportation Commission (Alameda CTC), has over 24 years of transportation-related experience. She directs all short- and long-range transportation planning for Alameda County and is also responsible for policy, legislation and government, and community relations at Alameda CTC. She led development of 2014's Measure BB, the \$8 billion, 30-year 2014 Transportation Expenditure Plan, approved by Alameda County voters in order to: expand BART, bus, and commuter rail for reliable, safe, and fast services; keep fares affordable for seniors, youth, and people with disabilities; provide traffic relief; improve air quality and provide clean transportation; and create good jobs within Alameda County. Lengyel holds a Bachelor's in planning and policy/environmental studies. ( *PANEL ONE* )



**Alix Bockelman** is the Deputy Executive Director of Policy for the Metropolitan Transportation Commission, where she oversees: (1) strategic financial planning and management of federal, state, and regional fund sources for transit, highways, roadways, and other modes; (2) state and federal legislative advocacy, and public affairs and community outreach; and (3) planning, including the Bay Area's long-range regional transportation and land use plan, air quality, and freight issues. Outside of MTC, she chairs the Transportation Research Board's Committee on Transportation Programming and Investment Decision-Making, and is a member of the Women's Transportation Seminar (WTS), whose San Francisco Bay Area chapter named her "Woman of the Year" in 2007. She holds a Bachelor's in Civil Engineering and a Master's in Public Policy, both from UC Berkeley. ( *PANEL ONE* )



**Richard Marcantonio** is a managing attorney at Public Advocates Inc., where he leads the transportation, housing, and climate justice advocacy and litigation team. He also serves as the social equity representative on the California Transportation Commission's Road Charge Technical Advisory Committee, which recently released its recommendations under SB 1089 (DeSaulnier). His deep knowledge of both affordable housing and transportation equity makes him a valued interdisciplinary advocate. As California reforms its approach to regional planning for land use and transportation, Marcantonio is working with coalitions around the state to ensure that laws calling for greenhouse gas emission reductions are implemented to bring benefits, rather than added burdens, to low-income communities and communities of color. ( *PANEL ONE* )



**Steve Raney** serves as Executive Director for Joint Venture Silicon Valley's Mobility as a Service (MaaS) Software Ecosystem Acceleration Initiative. His body of work includes: commercialization analysis studies for Nissan and Google self-driving car teams; Principal Investigator for the US Environmental Protection Agency's "Transforming Office Parks into Transit Villages" Study (for Pleasanton's Hacienda Biz Park); Principal Investigator, Personal Rapid Transit Feasibility Analysis for University of Texas; and Project Manager, BART's Group Rapid Transit Study. He led last mile transit studies for Palo Alto's Stanford Research Park, Oakland Airport, Emeryville, South San Francisco, and Google Campus. Raney has three Master's, in business, software, and transportation, from Columbia, RPI, and Berkeley. ( *PANEL TWO* )